

Prepared by & Return to: Linn County Secondary Road Department, 1888 County Home Road, Marion, IA 52302 (319) 892-6400

RESOLUTION # 2019-4-49

ESTABLISH NO PARKING ZONE

WHEREAS, Section 26-50 of the Code of Ordinances for Linn County, Iowa provides that the Linn County Board of Supervisors may designate no parking zones upon recommendation of the Linn County Engineer, and

WHEREAS, the Linn County Engineer recommends a no parking zone on a portion of Vernon Valley Drive, and

WHEREAS, businesses along Vernon Valley Drive have customers parking on the road, and

WHEREAS, Vernon Valley Drive has a traffic volume that parked cars on both sides is unsafe, and

NOW, THEREFORE BE IT RESOLVED by the Linn County Board of Supervisors that the east side of Vernon Valley Drive, including all of the public rights-of-way adjacent thereto, shall be deemed no parking zones.

BE IT FURTHER RESOLVED, that the Highway Authority shall be responsible to erect signs as required by the ordinance and approved by the Linn County Engineer.

Moved by Supervisor Olson Seconded by Supervisor Rogers
that the above resolution be adopted this 3 day of April, 2019 by a vote of 3 aye 0 nay and
0 abstain from voting.

BOARD OF SUPERVISORS
LINN COUNTY, IOWA

Stacy Wally
Chairperson

[Signature]
Vice Chairperson

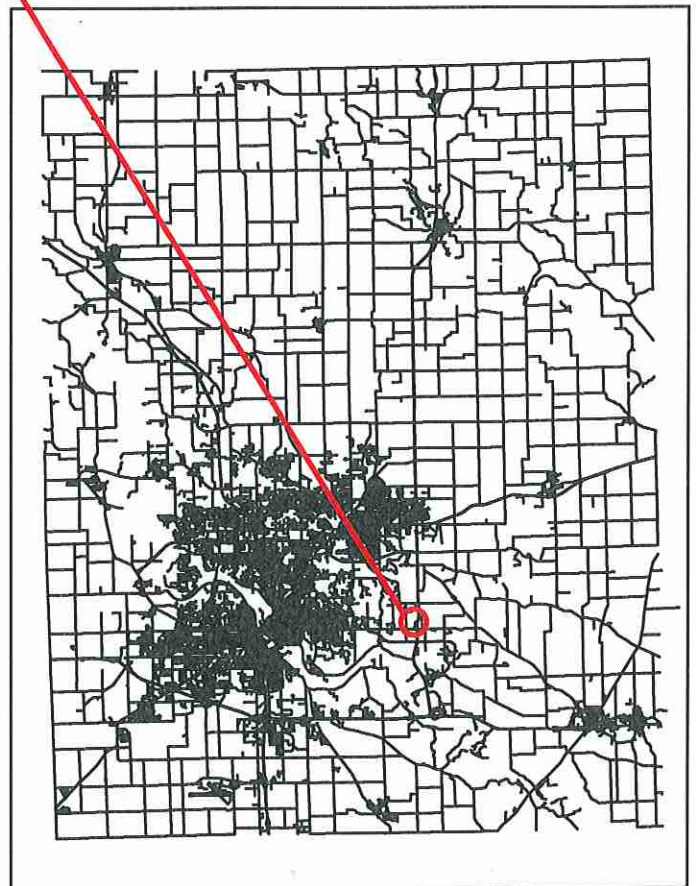
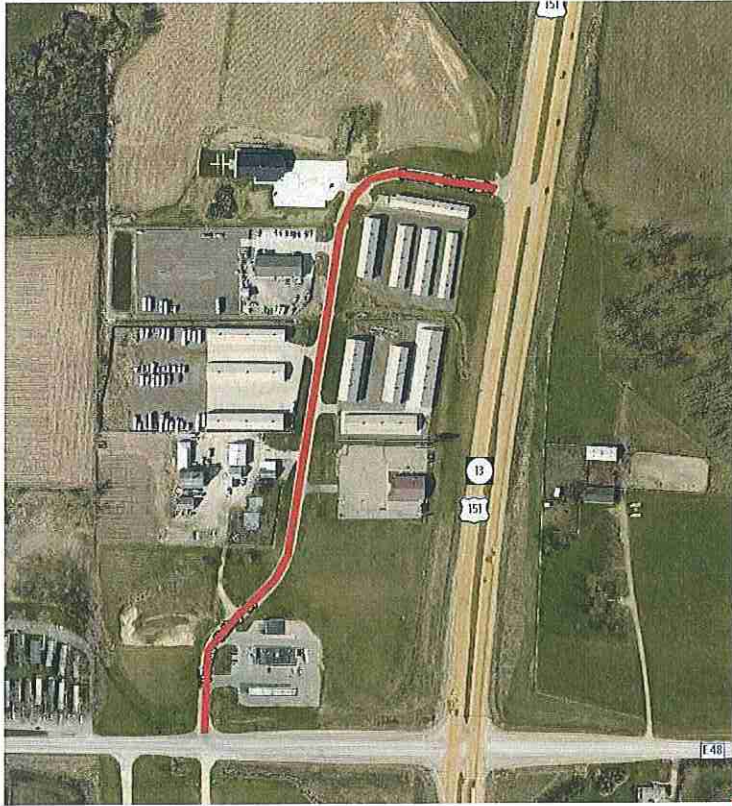
[Signature]
Supervisor

ATTEST:

Joel Miller by Barbara Sloop,
Linn County Auditor
Deputy



No Parking Resolution Vernon Valley Drive - Mount Vernon Road to Highway 13



LINN COUNTY SECONDARY ROAD DEPARTMENT
1888 COUNTY HOME ROAD
MARION, IA 52302
PH: 319-892-6400 | FAX: 319-892-6419

LinnCounty.org



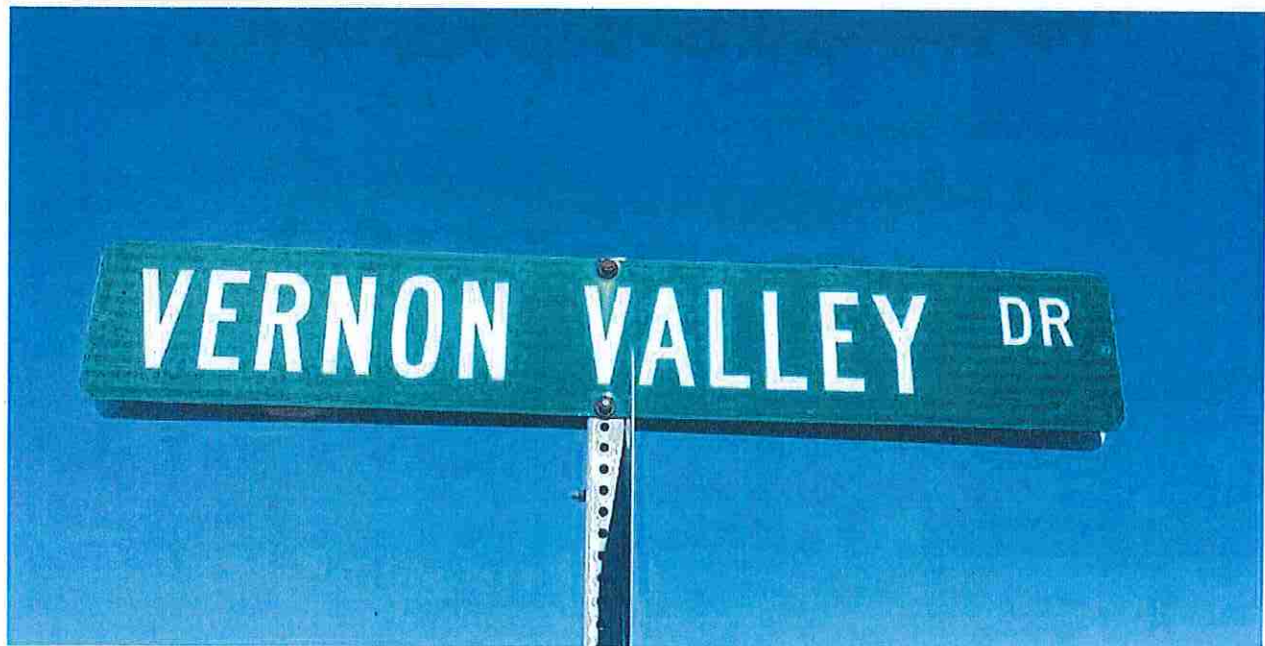
Vernon Valley Drive

Linn County, Iowa

No Parking Report

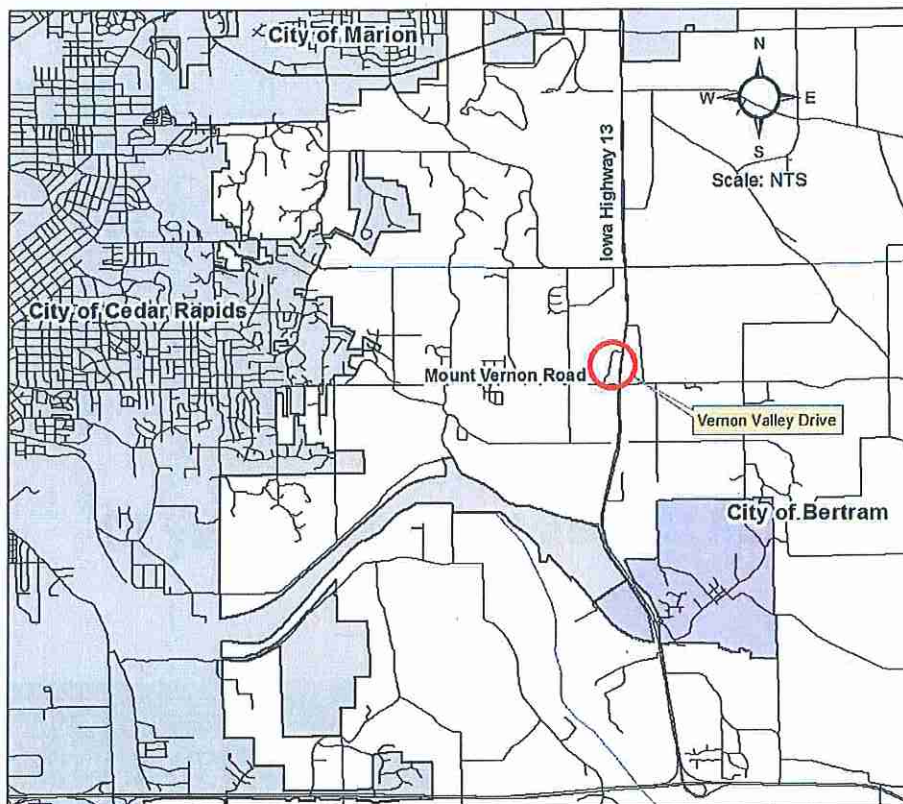
Mount Vernon Road to Highway 13

February 5, 2019



Garret Reddish, P.E.

Linn County Assistant Engineer I



Location Map

Summary

Parking along Vernon Valley Drive is being reviewed due to on-street parking causing problems with access and safety. The event center at 803 Vernon Valley Drive regularly hosts events where their guests use Vernon Valley Drive as overflow parking. Guests park on both sides of the road limiting access to nearby properties, preventing two way traffic, restricting access to emergency vehicles, and blocking the seven fire hydrants on site (Cedar Rapids Ordinance 61.090 specifies vehicles cannot be parked within 5 feet of a fire hydrant). The result of this review is to establish parking regulations that promote access and safety for all residents and road users.

Engineering Assessment

Iowa DOT Traffic and Safety Manual:

The size of No Parking signs shall be 24 inches by 30 inches for rural highways. The typical legend is "No Parking Any Time", but special messages may be appropriate under certain conditions. The number of No Parking signs should be held to the minimum needed for enforcement of the regulation. One sign per block on each side of the street may be sufficient.

MUTCD:

The conventional size is 24 inches by 30 inches and the minimum is 18 inches by 24 inches.

Recommendations:

- It is recommended to install six "No Parking This Side" signs spaced approximately 300' apart. The 300' spacing is the approximate size of a small city block as recommended by the DOT Traffic and Safety Manual.
- The first and last signs shall be approximately 180' from Mount Vernon Road and Highway 13.
- Since parking will only be restricted on the east side of Vernon Valley Drive it is recommended the sign include the special message "This Side" for clarification.
- The signs should be 18 inches by 24 inches per the MUTCD minimum. Due to the 25 mph speed limit, the minimum sized signs are sufficient for driver legibility.



Recommended Sign Layout

Approved By:

Brad Ketels, P.E.
County Engineer

3/25/19

Date