

Prepared by and Return to: Linn County Secondary Road Department, 1888 County Home Road, Marion, Iowa 52302, (319)892-6400

**RESOLUTION # 2019-10-141**

**ESTABLISH ROAD CLOSURE AND DETOUR FOR PROJECT**

WHEREAS: Linn County Project STBG-SWAP-C057(138)—FG-57, PCC Paving, on County Home Road Road (E34) in Linn County will begin soon.

WHEREAS: this project lies on a marked Farm-to-Market route, and

WHEREAS: a detour must be established to close a marked route for longer than 48 hours, and

WHEREAS: a map of the detour is attached hereto.

NOW, THEREFORE, BE IT RESOLVED: that the Linn County Board of Supervisors hereby authorize and direct the Linn County Engineer to place the appropriate signs to establish the following detour: commencing at the intersection of County Home Road (E34) and Interstate 380, head south on Interstate 380 for 5.0 miles to Highway 100, head east on Highway 100 for 6.8 miles to Highway 13, head north on Highway 13 for 5.1 miles to the end of the detour. (See attached map)

Signs shall be placed when and as necessary to protect the work and the traveling public in accordance with the Manual on Uniform Traffic Control Devices and Chapter 306 of the Code of Iowa.

Moved by Supervisor Oleson Seconded by Supervisor Walker  
that the above resolution be adopted this 16 day of Oct., 2019 by a vote of 2 aye 0 nay and 0  
abstain from voting.

BOARD OF SUPERVISORS  
LINN COUNTY, IOWA

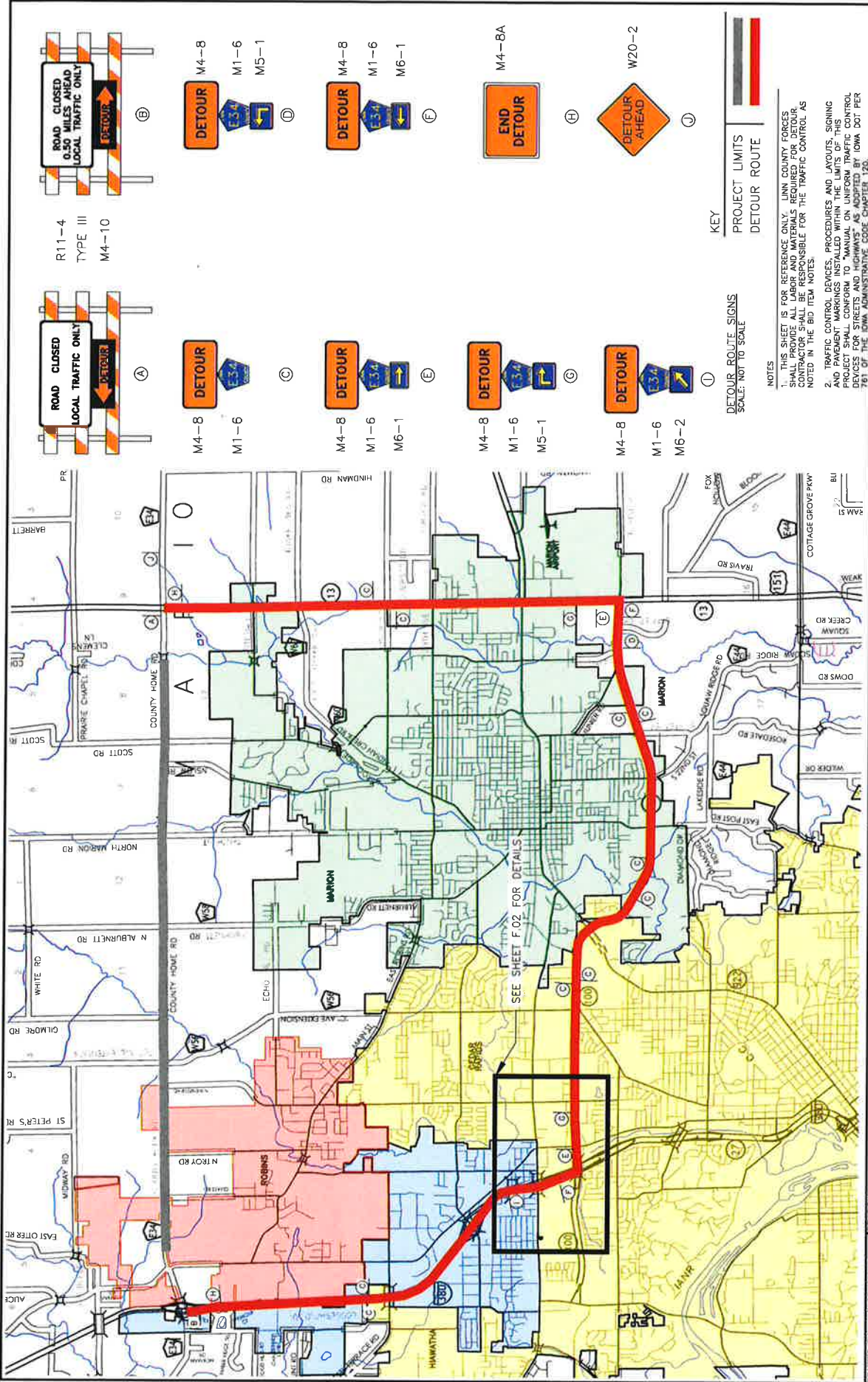
Stacy Wally  
Chairperson

[Signature]  
Vice Chairperson

[Signature]  
Supervisor

ATTEST:

Joel Miller by Rebecca Shoop,  
Linn County Auditor Deputy



<p><b>ROAD CLOSED 0.50 MILES AHEAD LOCAL TRAFFIC ONLY</b></p> <p>R11-4 TYPE III M4-10</p> <p><b>ROAD CLOSED LOCAL TRAFFIC ONLY</b></p> <p>M4-8 M1-6</p> <p><b>DETOUR</b></p> <p>M4-8 M1-6 M5-1</p> <p><b>DETOUR</b></p> <p>M4-8 M1-6 M6-1</p> <p><b>DETOUR</b></p> <p>M4-8 M1-6 M5-1</p> <p><b>DETOUR</b></p> <p>M4-8 M1-6 M6-2</p> <p><b>END DETOUR</b></p> <p>M4-8A</p> <p><b>DETOUR AHEAD</b></p> <p>W20-2</p>	<p>KEY</p> <p>PROJECT LIMITS</p> <p>DETOUR ROUTE</p> <p>NOTES</p> <ol style="list-style-type: none"> <li>THIS SHEET IS FOR REFERENCE ONLY. LINN COUNTY FORGES SHALL PROVIDE ALL LABOR AND MATERIALS REQUIRED FOR DETOUR. CONTRACTOR SHALL BE RESPONSIBLE FOR THE TRAFFIC CONTROL AS NOTED IN THE BID ITEM NOTES.</li> <li>TRAFFIC CONTROL DEVICES, PROCEDURES AND LAYOUTS, SIGNING AND PAVEMENT MARKINGS INSTALLED WITHIN THE LIMITS OF THIS PROJECT SHALL CONFORM TO "MANUAL ON UNIFORM TRAFFIC CONTROL DEVICES FOR STREETS AND HIGHWAYS" AS ADOPTED BY IOWA DOT PER 720.02 OF THE IOWA ADMINISTRATIVE CODE CHAPTER 120.</li> </ol> <p>SCALE: NOT TO SCALE</p> <p>DETOUR ROUTE SIGNS</p>	<p>COUNTY HOME ROAD</p> <p>STBG-SWAP-C057(138)-FC-57</p> <p>Secondary Road Department</p> <p>DETOUR ROUTE</p> <p>SHEET F.01</p>
---	---	---

REVISIONS:

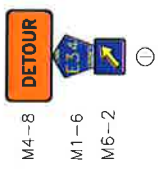
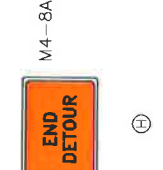
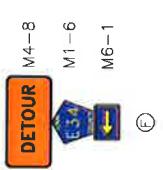
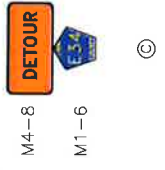
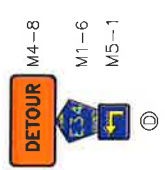
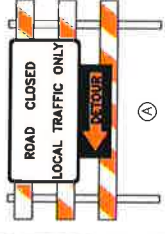
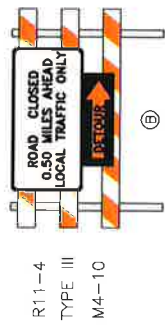
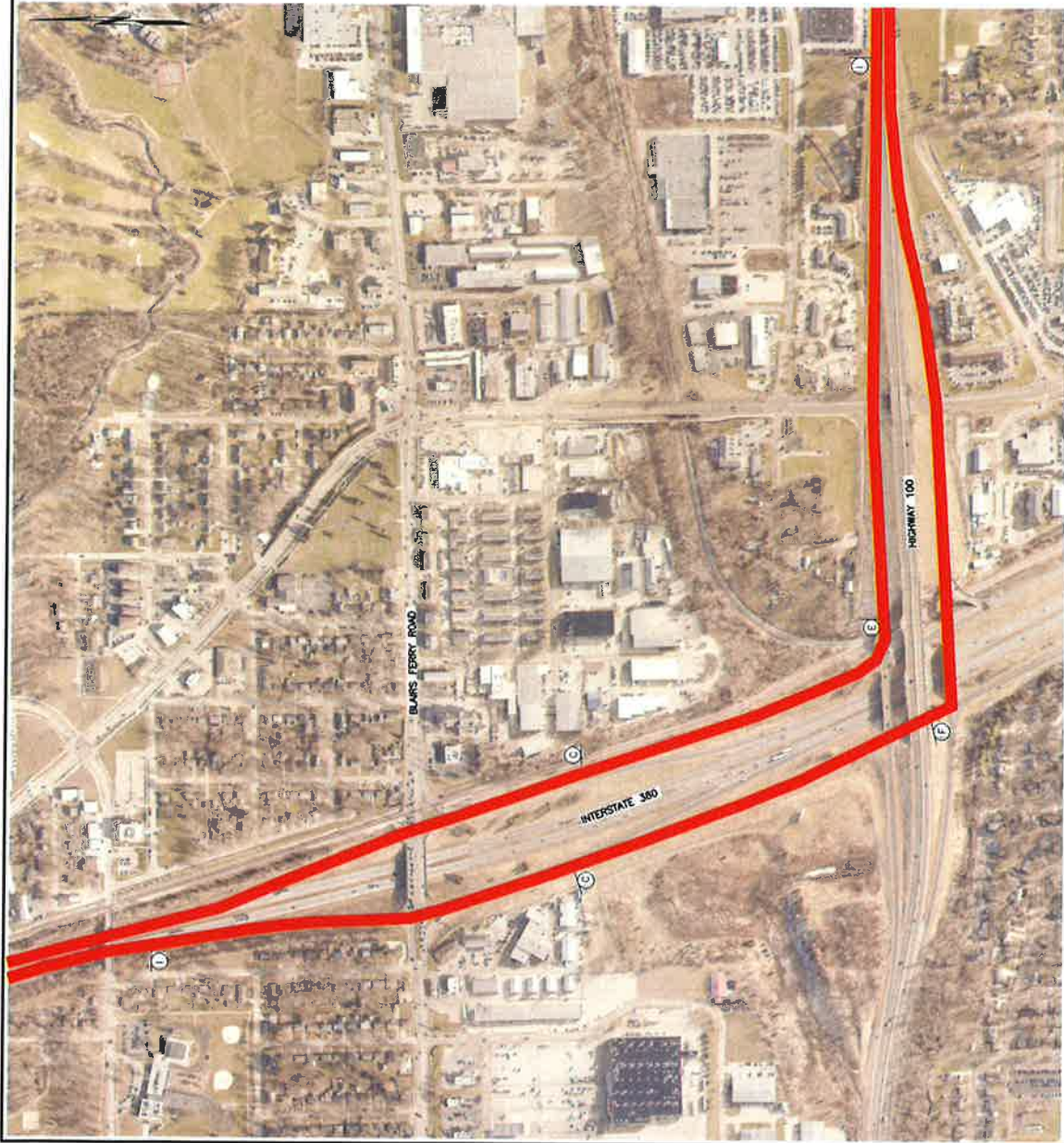
DRAFTED BY: AMB 03-22-18

REVISED BY: AAA MM-00-YY

PLOTTED BY: BAN, AUSTIN

10/7/2019 15:35

IOWA DOT PROJECT ROAD TO BRIDGE DRAWING



KEY

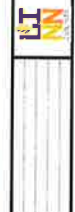
DETOUR ROUTE SIGNS  
SCALE: NOT TO SCALE

PROJECT LIMITS  
DETOUR ROUTE

NOTES  
THIS SHEET IS FOR REFERENCE ONLY. LINN COUNTY FORCES SHALL BE RESPONSIBLE FOR THE DETOUR. CONTRACTOR SHALL BE RESPONSIBLE FOR THE TRAFFIC CONTROL, AS NOTED IN THE BID ITEM NOTES.  
2. TRAFFIC CONTROL DEVICES, PROCEDURES AND LAYOUTS, SIGNING AND PAVEMENT MARKINGS INSTALLED WITHIN THE LIMITS OF THIS PROJECT SHALL CONFORM TO "MANUAL ON UNIFORM TRAFFIC CONTROL DEVICES FOR STREETS AND HIGHWAYS" AS ADOPTED BY IOWA DOT PER 751 OF THE IOWA ADMINISTRATIVE CODE CHAPTER 120.

REVISIONS  
DRAFTED BY: AMB 03-22-18  
REVISED BY: AAA MM-00-YY  
PLOTTED BY: BAIN, AUSTIN  
10/7/2019 15:39

Secondary Road Department  
STBG-SWAP-C057(138)-FC-57  
PCC OVERLAY



COUNTY HOME ROAD

DETOUR ROUTE

SHEET F.02