

Prepared by and Return to: Linn County Secondary Road Department, 1888 County Home Road, Marion, Iowa 52302, (319)892-6400

RESOLUTION # 2021-4-52

ESTABLISH ROAD CLOSURE AND DETOUR FOR PROJECT

WHEREAS: Linn County Project FM-C057(151)—55-57, RCB Replacement, on Burnett Station Road (E28), in Linn County will begin soon.

WHEREAS: this project lies on a marked Farm-to-Market route, and

WHEREAS: a detour must be established to close a marked route for longer than 48 hours, and

WHEREAS: a map of the detour is attached hereto.

NOW, THEREFORE, BE IT RESOLVED: that the Linn County Board of Supervisors hereby authorize and direct the Linn County Engineer to place the appropriate signs to establish the following detour: commencing at the intersection of North Street (E28) and N Main Ave in Alburnett, head north on N Main Ave for 0.3 miles until road changes names to N Alburnett Road, continue north on N Alburnett Road for 2.8 miles to Central City Road, head east on Central City Road for 4.3 miles to Iowa Highway 13, head south on Iowa Highway 13 for 3.3 miles to the end of the detour. (See attached map)

Signs shall be placed when and as necessary to protect the work and the traveling public in accordance with the Manual on Uniform Traffic Control Devices and Chapter 306 of the Code of Iowa.

Moved by Supervisor Rogers Seconded by Supervisor Walker
that the above resolution be adopted this 21 day of April, 2021 by a vote of 3 aye 0 nay and 0
abstain from voting.

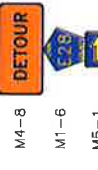
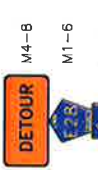
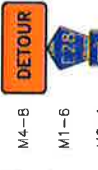
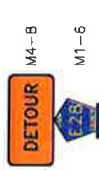
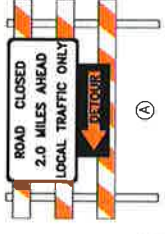
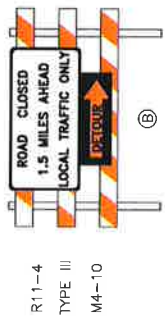
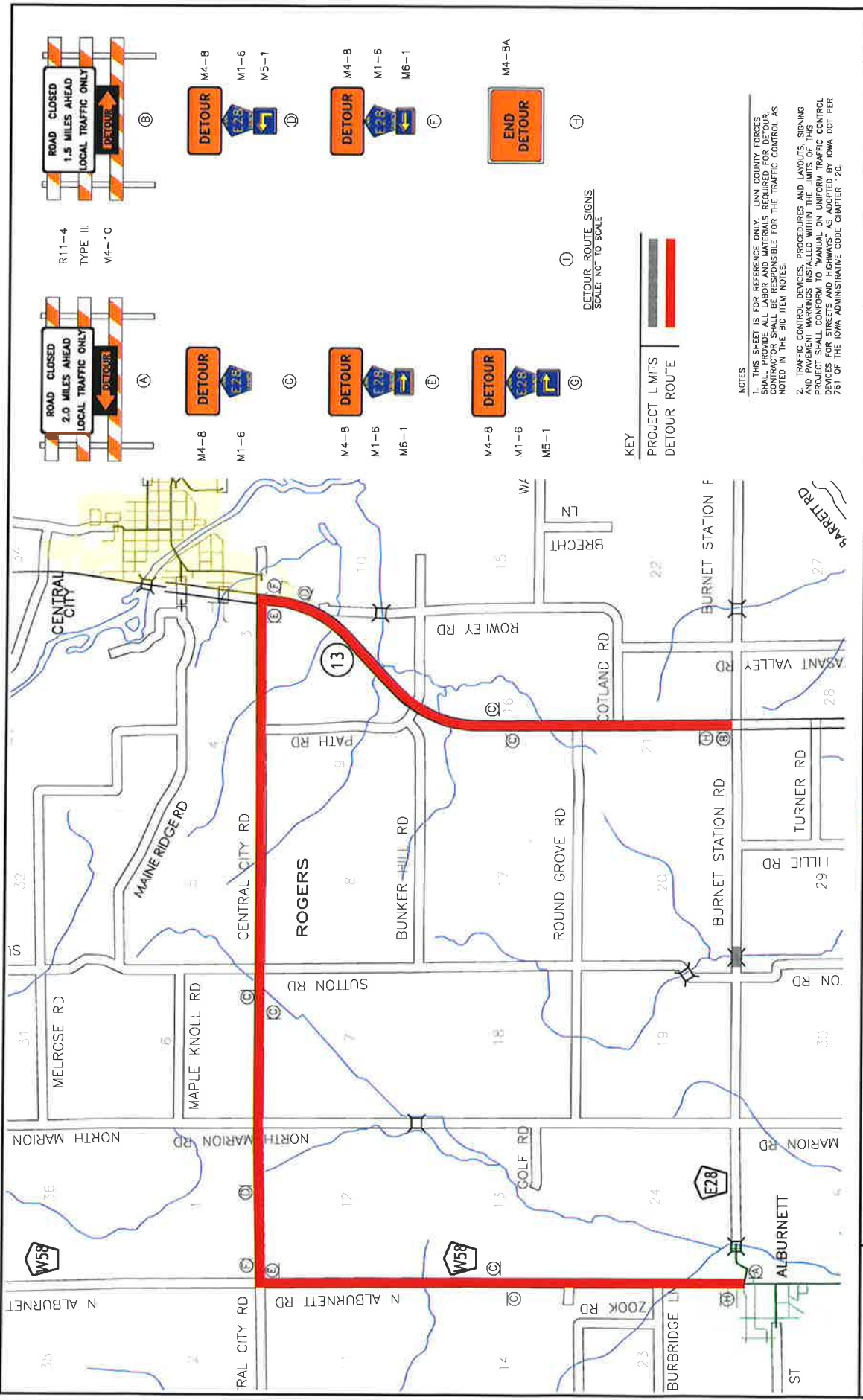
BOARD OF SUPERVISORS
LINN COUNTY, IOWA

Stacey Walk
Chairperson

[Signature]
Vice Chairperson

[Signature]
Supervisor

ATTEST:
Joel Milley by Rebecca
Linn County Auditor
Shoop, Deputy



KEY
PROJECT LIMITS
DETOUR ROUTE

DETOUR ROUTE SIGNS
SCALE: NOT TO SCALE

NOTES
1. THIS SHEET IS FOR REFERENCE ONLY. LINN COUNTY FORCES SHALL BE RESPONSIBLE FOR THE INSTALLATION OF THE SIGNS. THE CONTRACTOR SHALL BE RESPONSIBLE FOR THE TRAFFIC CONTROL AS NOTED IN THE BID ITEM NOTES.
2. TRAFFIC CONTROL DEVICES, PROCEDURES AND LAYOUTS, SIGNING AND PAVEMENT MARKINGS INSTALLED WITHIN THE LIMITS OF THIS PROJECT SHALL CONFORM TO "MANUAL ON UNIFORM TRAFFIC CONTROL DEVICES FOR STREETS AND HIGHWAYS" AS ADOPTED BY IOWA DOT PER 781 OF THE IOWA ADMINISTRATIVE CODE CHAPTER 120.

SHEET F.01	DETOUR ROUTE	BURNETT STATION ROAD FM-C057(151)--55-57 RCB CULVERT REPLACEMENT - TWIN BOX	Secondary Road Department		REVISIONS: DRAFTED BY: AMB 02-15-20 REVISED BY: AAA WA-DD-YY PLOTTED BY: GAN, AUSTIN 10/12/2020 10:35 I:\Projects\2020\151\151-55-57\151-55-57.dwg
---------------	--------------	---	---------------------------	--	---