

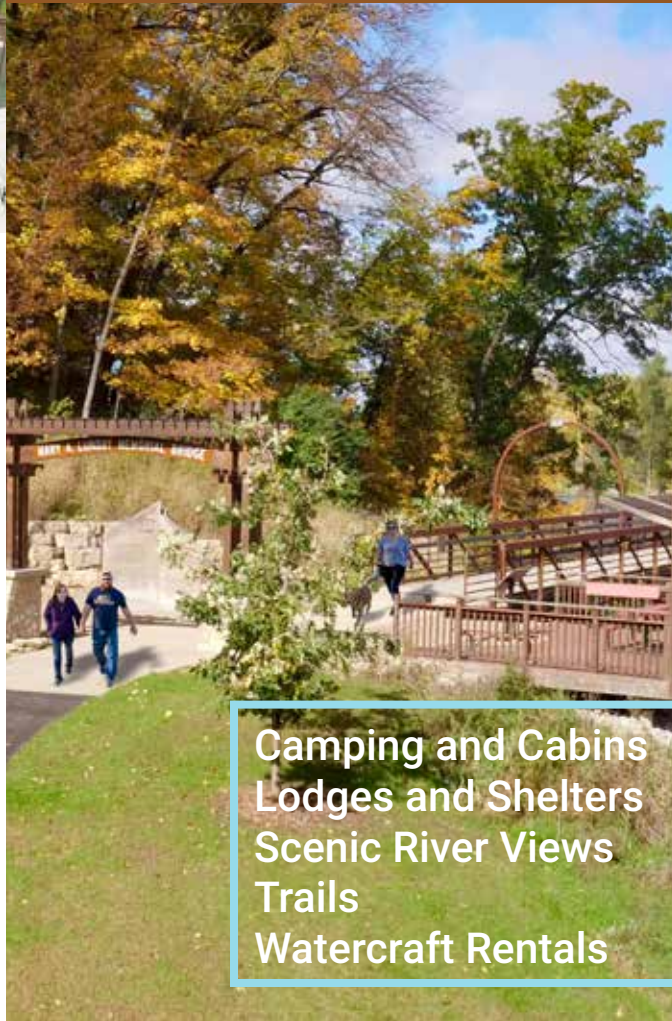
Get full details, make reservations, and learn about activities at Pinicon Ridge Park and all Linn County Conservation facilities at [LinnCountyParks.com](http://LinnCountyParks.com)



Riverside shelter and playground

# PINICON RIDGE COUNTY PARK

[LINNCOUNTYPARKS.COM](http://LINNCOUNTYPARKS.COM)



Camping and Cabins  
Lodges and Shelters  
Scenic River Views  
Trails  
Watercraft Rentals



Questions, comments or more information, phone (319) 892-6450 or email at [Conservation@LinnCounty.org](mailto:Conservation@LinnCounty.org)

Pinicon Ridge Park Office (319) 438-6616



# Camping, Cabins, Lodges, Shelters



**CAMPGROUNDS** can be accessed on the north side of the park off Valley Farm Road. The normal camping season is April 15 – October 15, weather and ground conditions permitting. Over 100 sites are available in the Flying Squirrel and Plains campgrounds

**first come-first served**, and most with electricity and water hookups. Each family campground has a showerhouse with restrooms. Group campgrounds, located on the south end of the park, are designed for use by groups larger than six people and three or more camping units.

**CABINS** | Four log cabins offer the opportunity to enjoy a nature experience without hauling a camper or pitching a tent.



**Pintail Cabin:** Two bedroom, living area, bathroom, sleeps eight.

**Aspen or Bobwhite:** One bedroom, living area, bathroom, sleeps six

**River Otter:** Living Area, outdoor restroom, sleeps six

## Facility Rentals

Reservable lodges and shelters are popular for family, corporate and social events. Horseshoe Falls and Woodpecker lodges are enclosed, equipped with a full kitchen with outdoor space, and are available year round. Eagle View, Flying Squirrel, and Riverside open aired shelters are available during the warm recreation season.

**For more information and to reserve lodges, shelters, cabins, and group camps, click [facilities](http://facilities at LinnCountyParks.com) at LinnCountyParks.com**

*Coming Soon* ➔ **New Wapsi Bluff Shelter**, an open aired pavilion overlooking the Wapsi near the park entrance.



## Trails

**BOBWHITE** | 2 miles, 1.5 hour walk | Enjoy the scenic views as you enjoy the upland trail through areas of restored prairies.

**WAPSI-RIVER NATURE** | 2 mile, 1.5 hour walk | This multi-use paved trail connects the park to Central City. Parking is available near the Watercraft Concession and extends across the Mary Lundby Bridge.

**WHITE OAK** | 1.8 miles, 2 hour walk | The trailhead is located near the river by the boat ramp with a route through heavily wooded hills and valleys which connects to the group camps.

**FLYING SQUIRREL** | 2.7 miles, 2 hour walk | Take in stands of mixed pines, hills, and a splendid view of the river on your journey with the trailhead at Valley Farm Road. This area is open to hunting during the appropriate seasons.

**WOODPECKER HILL** | 1.7 miles, 45 minute walk | This trail features a unique limestone outcropping located in the valley of the forest and a small water cascade locally known as Horseshoe Falls. Trailhead parking is located at the top of Woodpecker Hill.

Known for its natural beauty along the Wapsipinicon River near Central City, Iowa, the 966 acre **Pinicon Ridge Park** has been developed over time into a modern recreation area and regional destination for many outdoor enthusiasts. The hilly, heavily wooded area divided by the river is home to many species of wildlife that can be viewed on a daily basis throughout the seasons. Camping and cabins are located from the north entrance at Valley Farm Road with day use park activities and the group campground from the south at Horseshoe Falls Road.

### PARK FEATURES INCLUDE

**MARY LUNDBY BRIDGE** | This 520-foot pedestrian bridge spans over the Wapsipinicon River with beautiful views connecting visitors to day use and campground sides of the park.

**PLAYGROUNDS** | New ADA accessible and inclusive playgrounds are located at the Riverside Shelter Area of the park and Flying Squirrel Campground.

**OBSERVATION TOWER** | Located 65 feet above ground on Woodpecker Hill makes this one of the highest points in Linn County, providing a picturesque view of the park and river valley.



**WATERCRAFT CONCESSION** | Typically open from May – September, in-park rentals include canoes, paddleboats and kayaks. Contact us regarding our two, four, or six hour canoe floats.

**ALEXANDER WILDLIFE AREA** | View American Elk located near the park entrance.

**BOAT RAMP** | Additional access to the Wapsipinicon River

### Americans with Disabilities Act

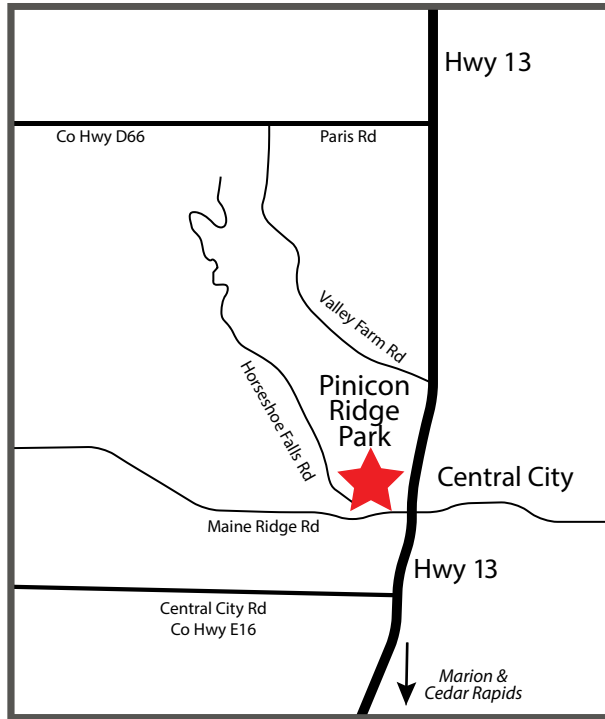
The Linn County Conservation Board intends to comply with the Americans with Disabilities Act and all other local, state and federal laws pertaining to equal treatment. If anyone believes he or she has been subject to discrimination on the basis of race, color, national origin, age or disability, they may file a complaint alleging discrimination with either the Linn County Conservation Board or the Office for Equal Opportunity, U.S. Department of the Interior, Washington, D.C. 20240.



# PINICON RIDGE COUNTY PARK

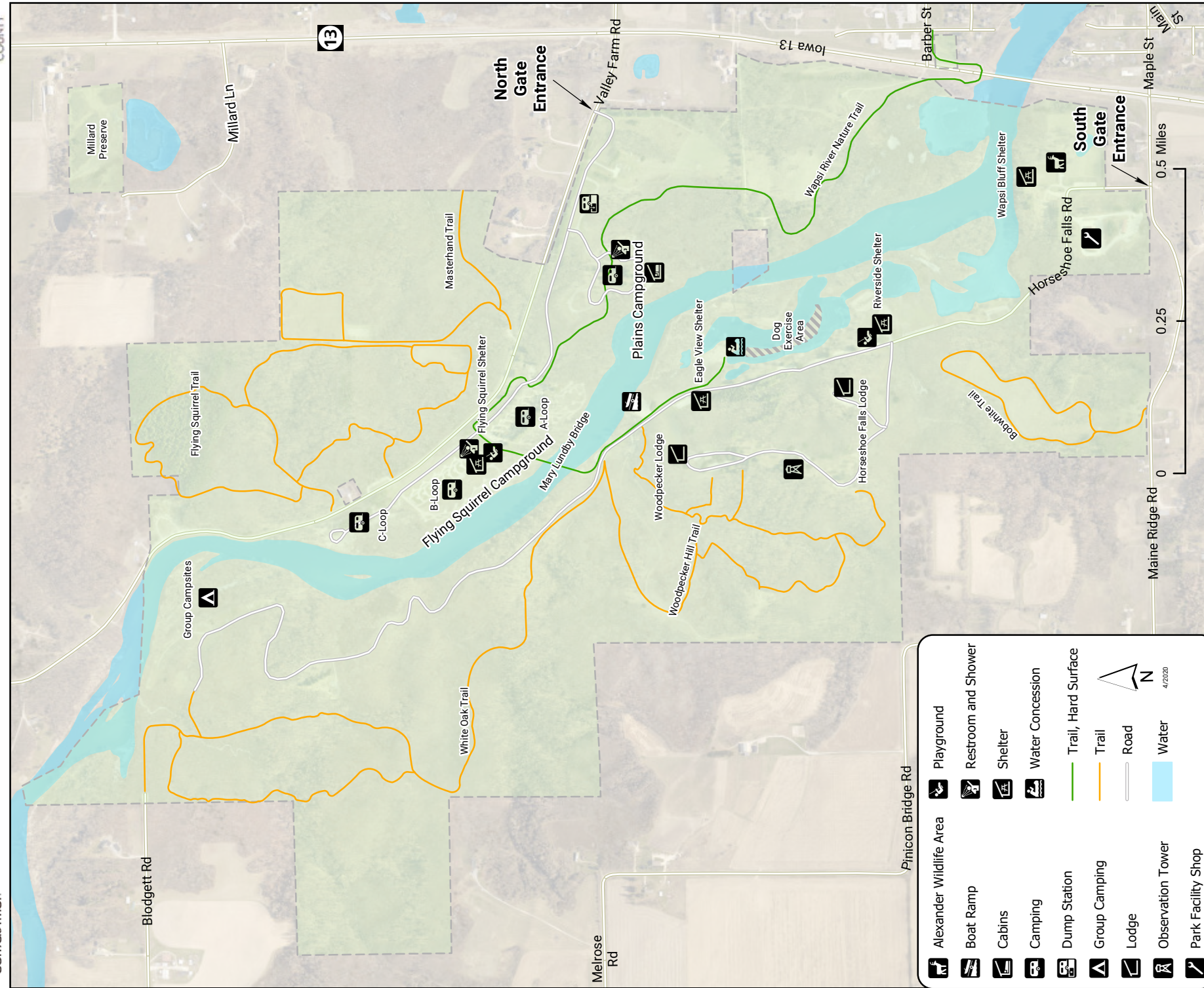
## Park Rules to Remember

1. Park hours are 4:00 a.m. to 10:30 p.m. The park closes at 10:30 p.m. except for registered campers. Some roads may be closed due to weather conditions.
2. Observe speed limits and park in designated areas only
3. Build fires in designated areas only
4. Keep pets on a leash
5. Do not litter: carry out your trash if cans are not available.



## Pinicon Ridge Park

4732 Horseshoe Falls Road, Central City, Iowa



	Alexander Wildlife Area		Playground
	Boat Ramp		Restroom and Shower
	Cabins		Shelter
	Camping		Water Concession
	Dump Station		Trail, Hard Surface
	Group Camping		Trail
	Lodge		Road
	Observation Tower		Water
	Park Facility Shop		

4/2020